



**KNOCK~~OUT~~!**  
BRANDING

SPORTSWEAR  
CATALOGUE





# TABLE OF CONTENTS

## MANUFACTURING PROCESS

HOW TO ORDER	2
SUBLIMATION PROCESS	2

## BRANDING, EMBROIDERY, NUMBERING

BRANDING SET UP SPECIFICATIONS	iii
FORMAT	iii
FONTS	iii
SIGN-OFF	iii
COLOURS	iii
EXAMPLES	iii

## COLOUR PALLETE

COLOUR PALLETE	1-2
----------------	-----

## SPORTS GARMENTS

RUGBY STYLES	3
CRICKET STYLES	4
SOCCER & MENS HOCKEY STYLES	5
LADIES HOCKEY / NETBALL STYLES	6
ATHLETIC & CYCLING STYLES	7
WARM UP / CASUAL STYLES	8
TRACKSUIT & JACKET STYLES	9

## MANUFACTURING PROCESS

RUGBY	10 - 11
GOLF	11
SOCCER	12
ATHLETICS	12
HOCKEY/NETBALL	13 - 14
TRACKSUITS & HOODIES	15

## MANUFACTURING PROCESS

RUGBY	16 - 18
CRICKET & GOLF	18 - 20
SOCCER	20 - 21
ATHLETICS & CYCLING	22 - 23
HOCKEY & NETBALL	24 - 28
TRACKSUITS & HOODIES	29 - 31

## MANUFACTURING PROCESS

# MANUFACTURING PROCESS

## HOW TO ORDER

When are ready to order or would like to enquire, please phone or email us and we will assist with your enquiry and requirements.

One of our experienced sales staff will take all your details and order information. You will receive a quotation for your enquiry and confirm your delivery dates. If you need size samples, we will assist gladly. You will receive an invoice for your order. A deposit may be required.

We will request your logos, artwork and colour requirements. One of our graphic designers will then start the creative process.

The designer will send you proofs from where you can make changes until you reach your final proof.

Once you approve the design your job will be sent to products for manufacture.

If you need any information on your order you can contact your sales executive and they will update you.

When your job is complete we will contact you for delivery details and any final payments that need to be arranged. As easy as that!

## SUBLIMATION PROCESS

We can match any school, club or corporate colour you need via the sublimation process. Sublimation is the permanent application of ink onto material via high pressure and temperature. The design, logo's and numbers are all incorporated into the print, which creates endless possibilities. Please supply any reference (PANTONE or sample) of your colours so we can make sure the end result is to your approval. Note that colours may vary slightly due to unexpected variables.

## MATERIAL SPECS

The fabrics we use for all our garments are high quality, moisture management fabrics that ensure movability and durability for all sport types. All fabrics are locally sourced and produced. Please feel free to enquire about the different types we use and which you would prefer.

## SALES & ORDER CONFIRMATION:

---

### ART DEPARTMENT:

---

### PRODUCTION CONFIRMATION:

---

### ACCOUNTS:

---

### RECEPTION & DISPATCH:

---



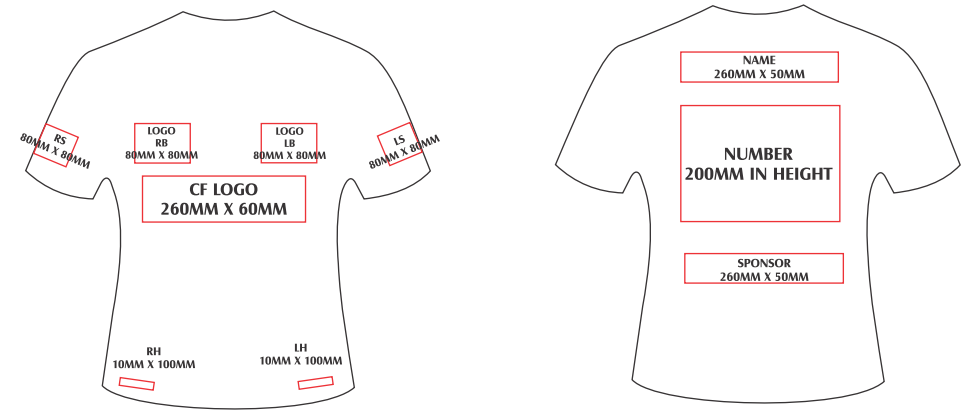
# BRANDING, EMBROIDERY & NUMBERING

## BRANDING SET-UP SPECIFICATIONS

Please ensure an electronic version (e.g. Corel draw / PDF / EPS / TIFF / JPEG) of the logos required are sent through with your orders. Please check the proof that will be sent to you for logo positioning and colours.

If you need a new logo designed or if we have to redraw a logo emblem due to poor quality sample, there might be extra charges and proofs will be sent to you for approval. A clear sample or example will be needed for redraw of logo's. All corporate logos supplied as vector artwork MUST comply with logo.

Guides:



## FORMAT

### ELECTRONIC

The preferred format for logos is in vector format that is CorelDRAW or Adobe Illustrator files (or PDF / EPS if converted from original files). Otherwise a TIFF, Bitmap or JPEG with a high resolution. DST files for embroidery will ensure no extra charge for digitizing.

### HARD COPY

If there is not an electronic version of the logo available, the logo will need to be supplied as a good quality hard copy. This can be a paper copy or laser printout but a redraw charge will be added to your order.

## FONT

Provide font names where applicable or when sending artwork, convert all fonts to curves.

## SIGN-OFF

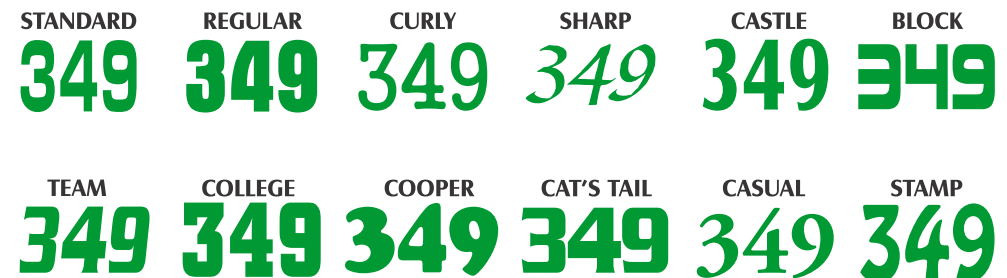
Ensure that all details on proof forms are checked and approved with a signed copy or via email.

## COLOURS

Pantone numbers must be provided if you require an exact colour, otherwise standard colours will be used.



## EXAMPLES

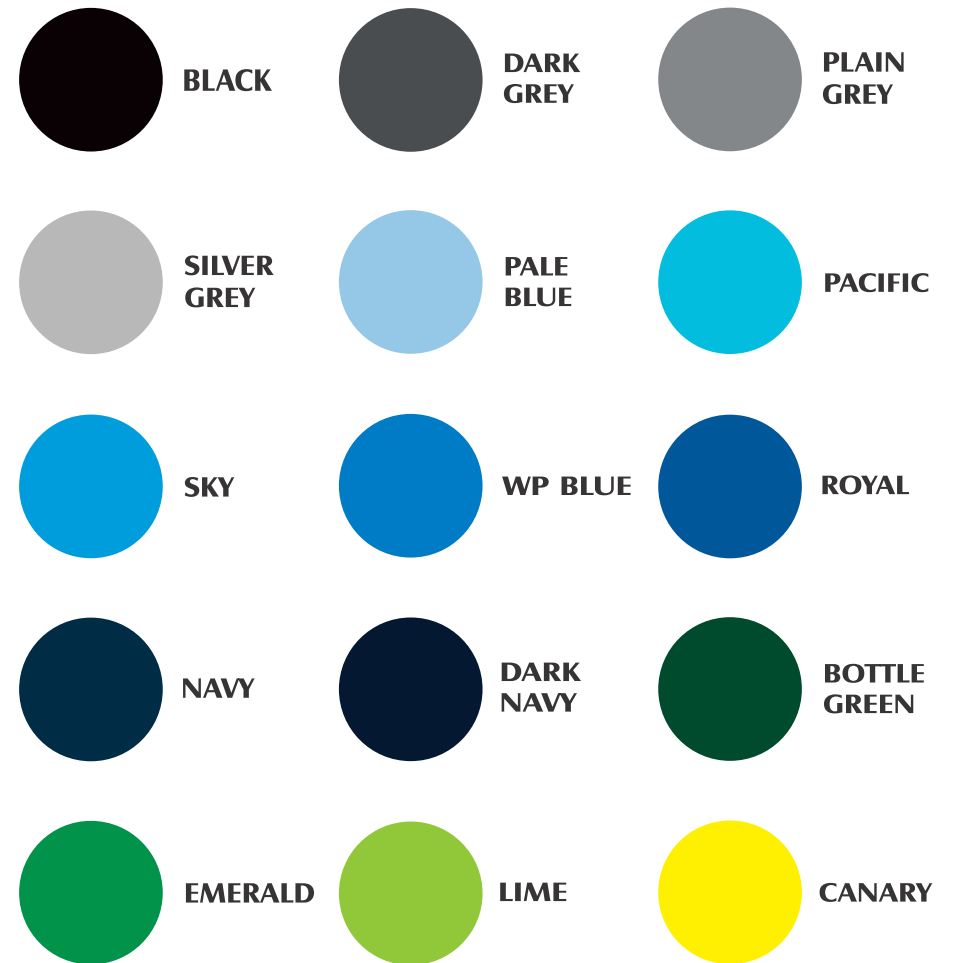


# COLOUR SET

## COLOURS

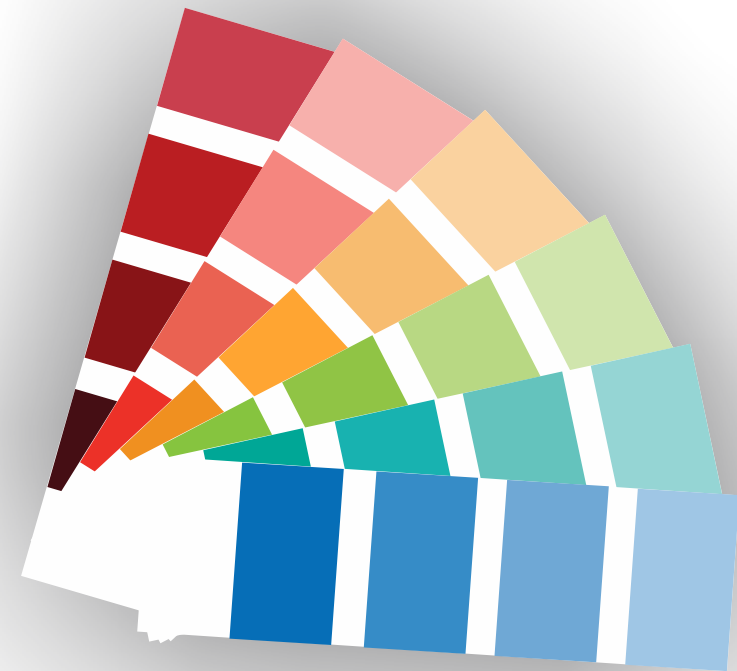
Sublimated jerseys allows you to use a variety of colours with no extra cost whatsoever. Panels and collars on the other hand will have you reach into your pocket slightly deeper but for better quality.

We work from pantone references if you do not know anything about colour, do not stress we have our standard colour palette ready for you to choose from.



# COLOUR SET

## COLOURS





# RUGBY STYLES

## RUGBY JERSEY FITTINGS

### THE STANDARD / CLUB FIT

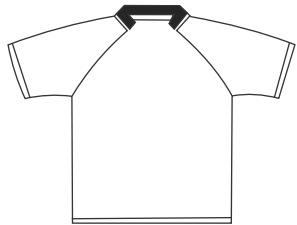
Our traditional, classic shape for a loose fitting comfortable feel.

### THE SLIM-FIT

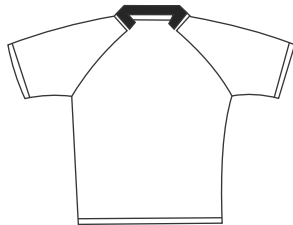
More streamline for a closer fit, but still comfortable enough for maximum movement.

### THE TIGHT-FIT

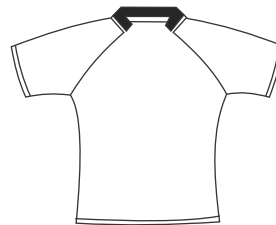
More muscle hugging with a superior feel and extra stretch to ensure durability and performance.



CLUB / STD FIT



SLIM FIT

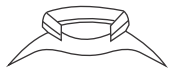


TIGHT / INT FIT  
(with binding or hem finish)

## COLLAR STYLES



1-POINT COLLAR



2-POINT COLLAR



MANDARIN COLLAR



Y-FLAT COLLAR



STUB & LOOP



ROUND



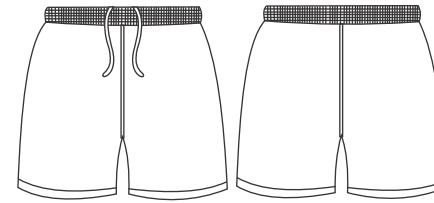
OVAL



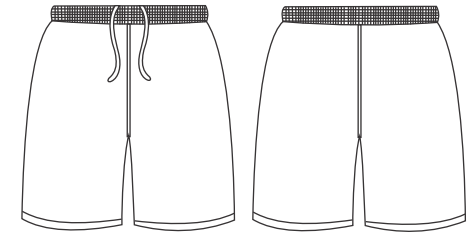
WILD CAT



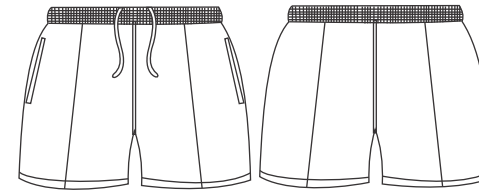
V-INSERT



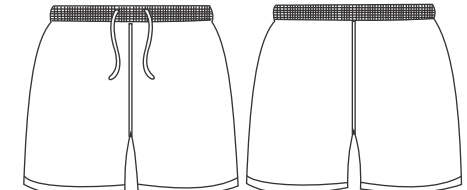
**RUGBY SHORT**  
drawcord, with or without pockets



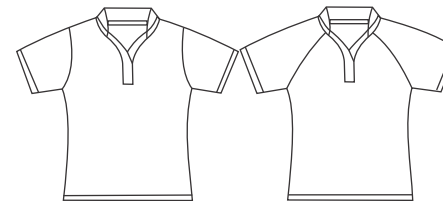
**WARM-UP SHORT**  
drawcord, with or without pockets



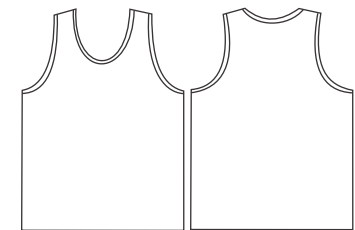
**TWILL RUGBY SHORT**  
drawcord, with pockets & re-inforcements



**PROFILE RUGBY SHORT**  
poly cotton twill & everest



**LADIES RUGBY**  
set-in / raglan sleeve



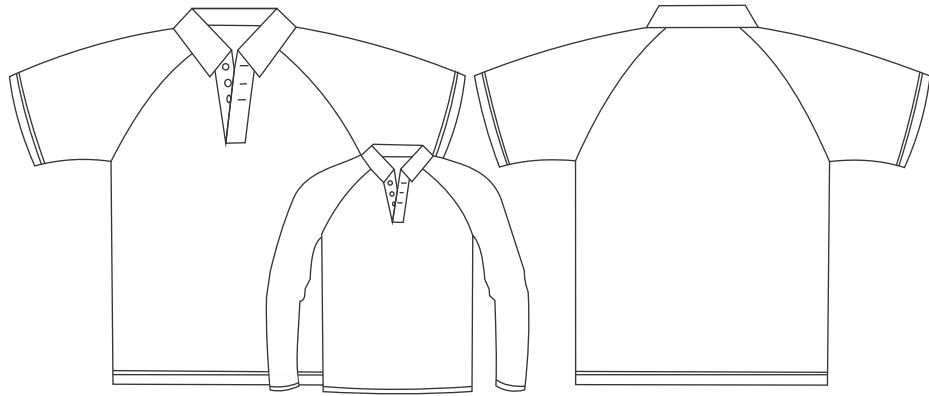
**MENS STANDARD WARM UP VEST**



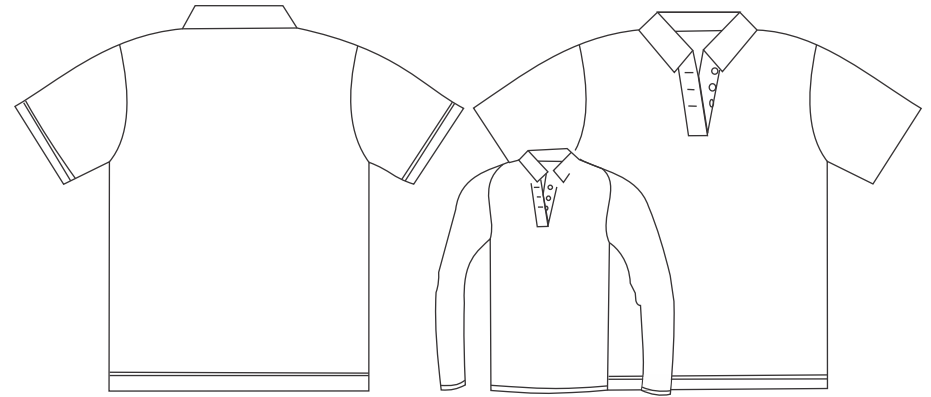
### RUGBY SOCKS - PULL UP OR TIE UP

Knitted socks. Please enquire about different colours available. Can have any stripe thickness.

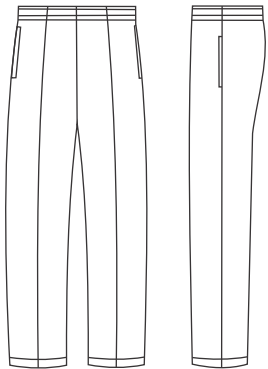
# CRICKET STYLES



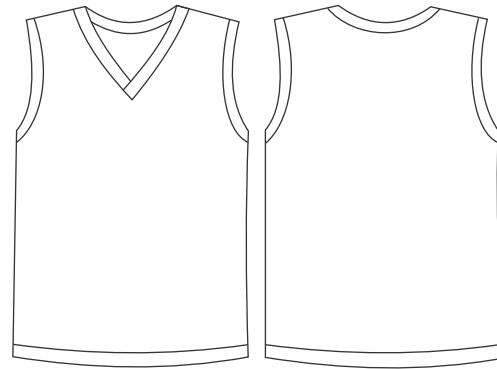
**CRICKET SHIRT**  
reglan shirt with collar (short & long sleeve)



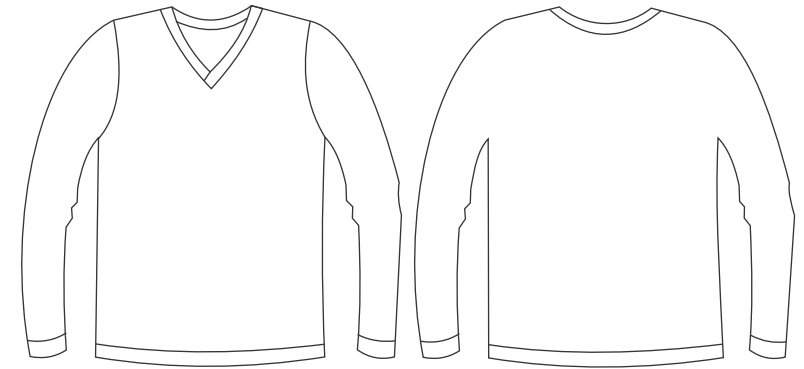
**CRICKET SHIRT**  
set-in shirt with collar (short and long sleeve)



**CRICKET PANTS**  
extra seams front and back pockets



**SLEEVELESS PULL OVER**  
with or without ribbing



**LONG SLEEVE PULL OVER**  
with or without ribbing

# SOCCER AND MENS HOCKEY

## COLLAR STYLES



V-NECK CROSS OVER



V-NECK



CREW NECK



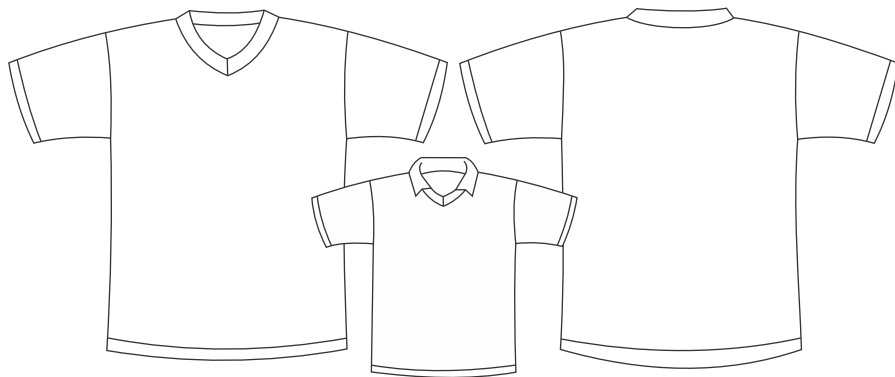
GRANDPA COLLAR



V-NECK WITH PIPING



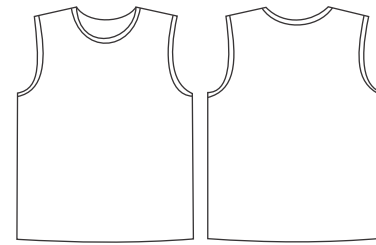
INSERT WITH PIPING



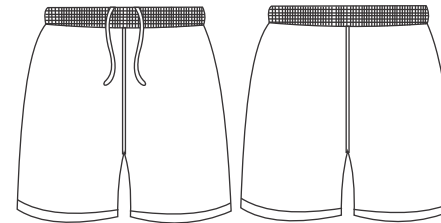
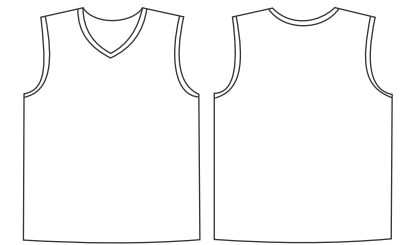
**SOCCER/HOCKEY SET-IN SLEEVE**  
v-necks can have a collar

### SOCCER SOCKS - PULL UP OR TIE UP

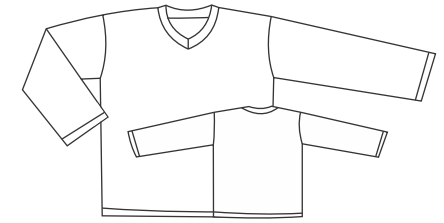
Knitted socks. Please enquire about different colours available. Can have any stripe thickness.



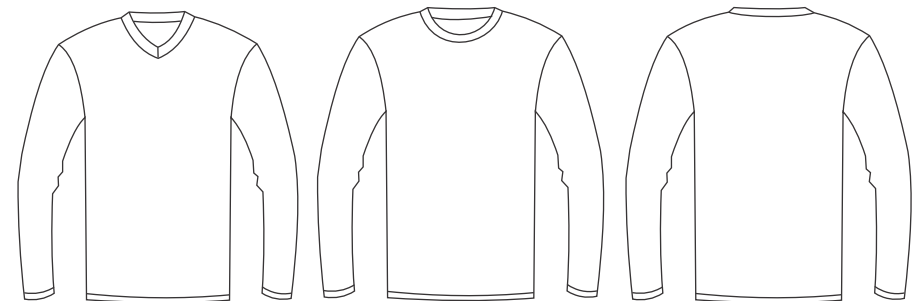
**MENS HOCKEY TANK VEST**  
round or v-neck collar



**SOCCER/HOCKEY SHORT**  
with drawcord. no side seams. no pockets



**HOCKEY SMOCK**  
set-in and v-neck

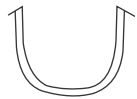


**MENS STANDARD WARM UP VEST**



# NETBALL AND LADIES HOCKEY

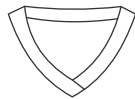
## COLLAR STYLES



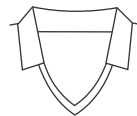
ROUND NECK



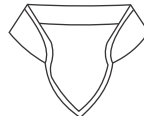
V-NECK



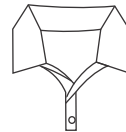
V-NECK CROSS OVER



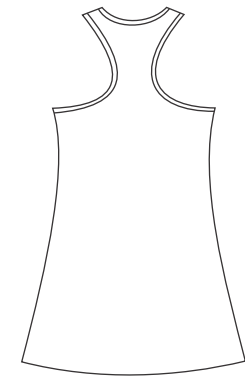
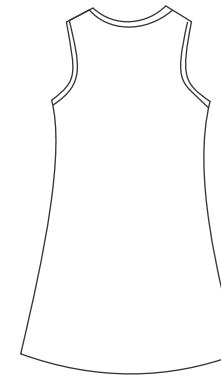
V-NECK WITH COLLAR



FLICK NECK

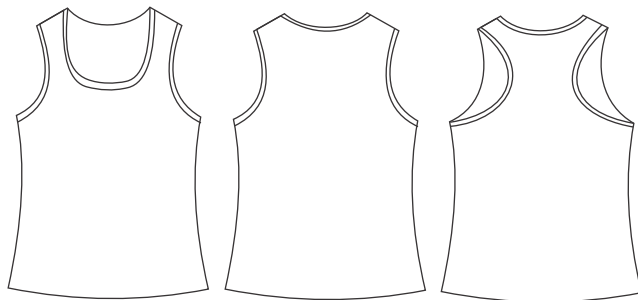


PLACKET COLLAR



## NETBALL/LADIES HOCKEY DRESSES

round or v-neck collar



## LADIES FIT VEST

round or v-neck collar

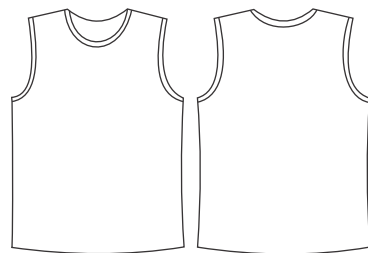


## PATCH BIB

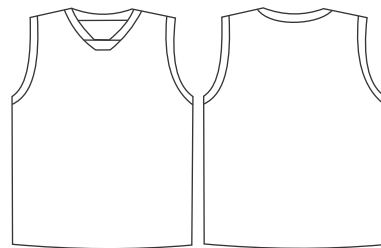
with velcro



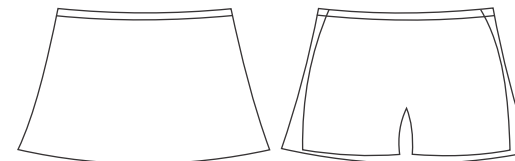
## PULL OVER BIB



## LADIES TANK VEST

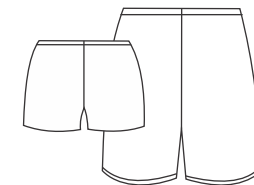


## SQUARE NECK VEST



## 2 PANEL SKIRT & SKORT

(skort has spandex inside)



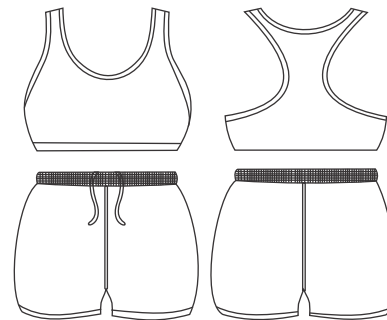
## SKI PANTS & HOT PANTS

# ATHLETIC AND CYCLING STYLES

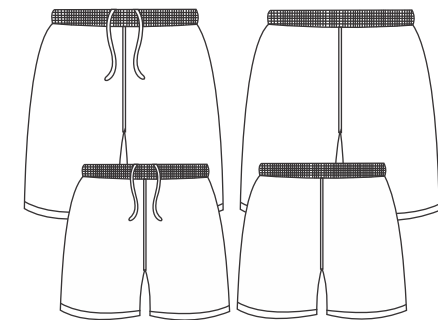
## COLLAR STYLES



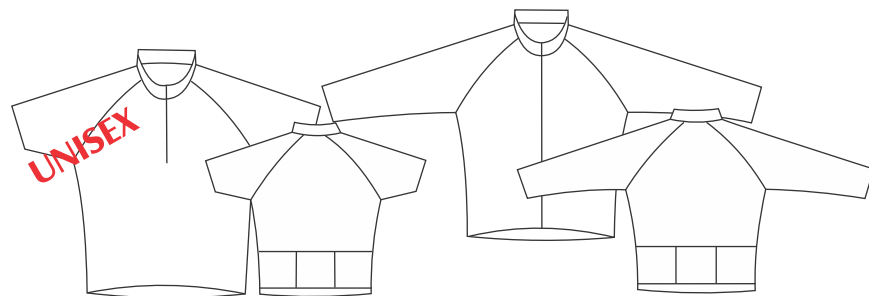
**MENS ATHLETIC VEST**



**LADIES CROPPED TOP & UNISEX ATHLETIC SHORT**



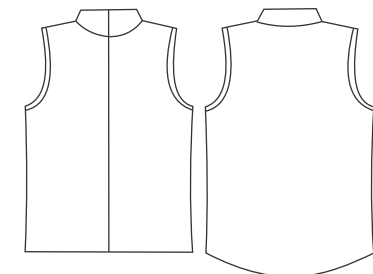
**QUANTEC SHORT**  
long or short



**SHORT & LONG SLEEVE**  
1/4, 3/4 or full zip

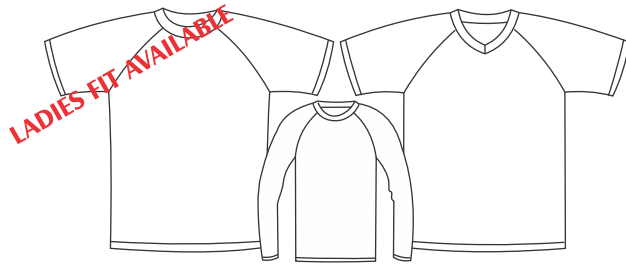


**MENS SLEEVELESS**  
1/4, 3/4 or full zip

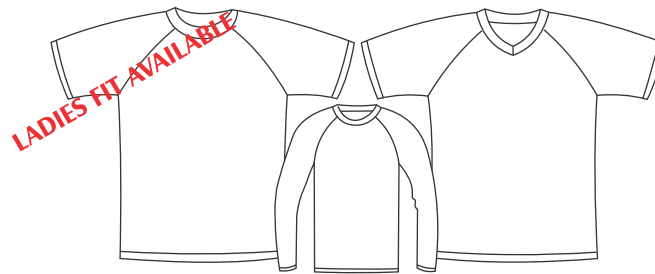


**CYCLING JACKET**  
micro active & mesh panels  
reflective / normal piping

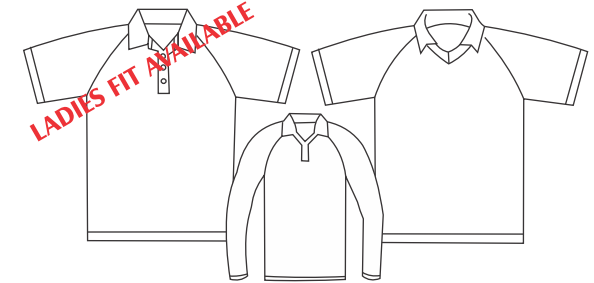
# WARM UP AND OTHER CLOTHES



**RAGLAN T-SHIRT**  
standard or slim fit, round or v-neck



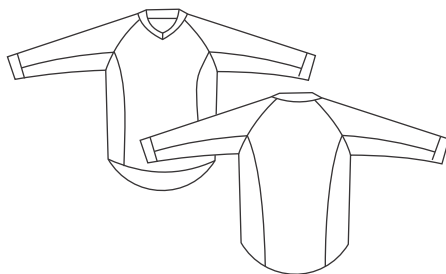
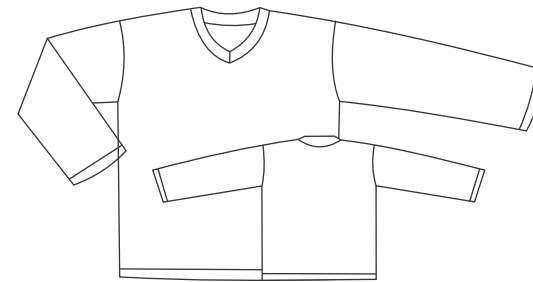
**SET-IN T-SHIRT**  
standard or slim fit, round or v-neck



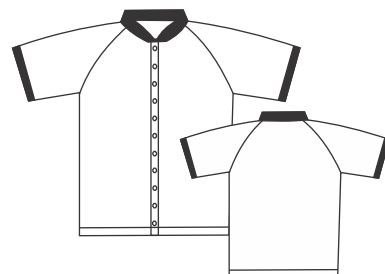
**RAGLAN GOLF T-SHIRT**  
standard or slim fit, traditional, y-neck or v-neck with collar



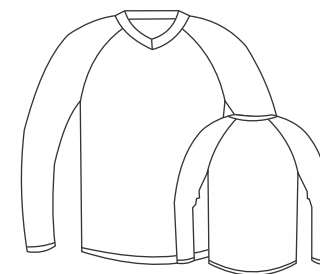
**SET-IN GOLF T-SHIRT**  
standard or slim fit, traditional, y-neck or v-neck with collar



**PAINTBALL SHIRT**  
side and arm panels plus piping



**POKER SHIRT**  
collar & sleeve with ribbing, studs front



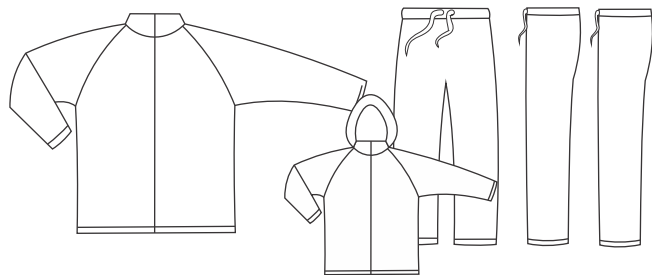
**MENS BIKER SHIRT**  
raglan, v-neck or round neck



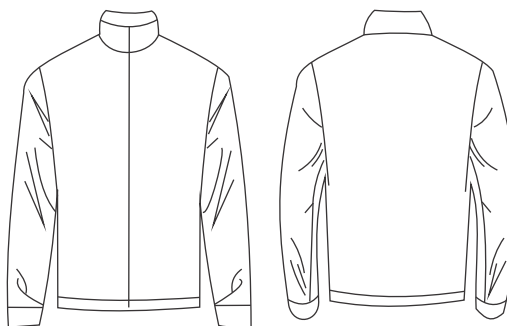
**MENS FISHING SHIRT**  
set-in, collar with zip



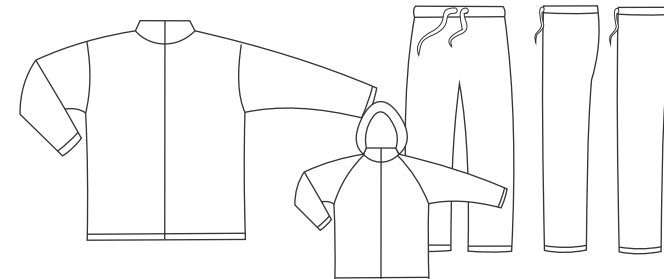
# TRACKSUIT AND JACKET STYLES



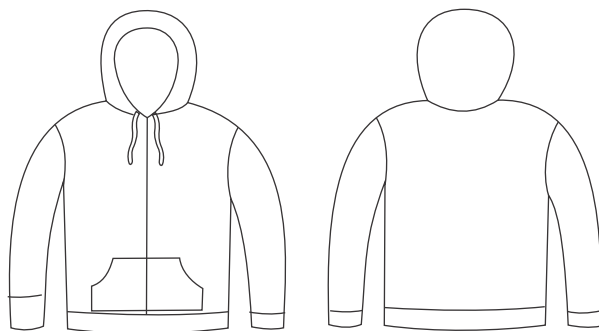
**RAGLAN TRACKSUIT TOP**  
available in standard, slim or ladies fit  
hidden hood optional



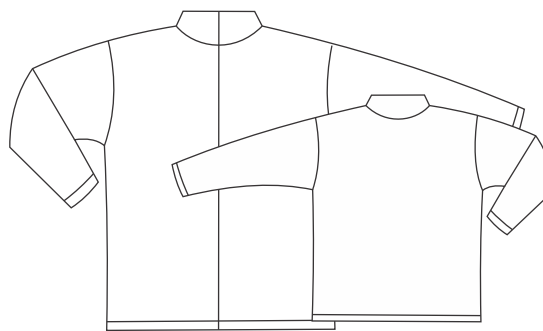
**STANDARD JACKET**  
padding & ribbing optional



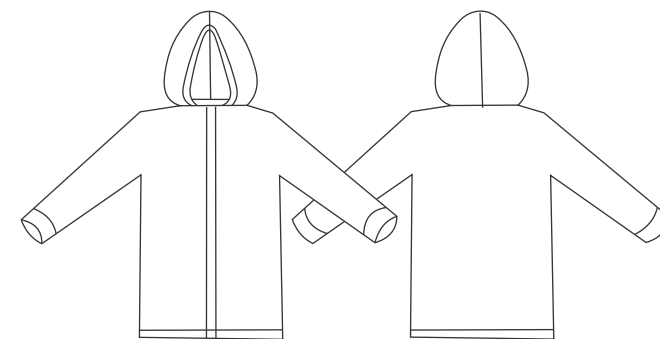
**SET-IN TRACKSUIT TOP**  
available in standard, slim or ladies fit  
hidden hood optional



**STANDARD HOODIE**  
with or without fleece lining

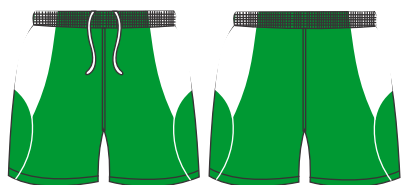


**FLEECE TOP**  
hood, pockets and zips optional

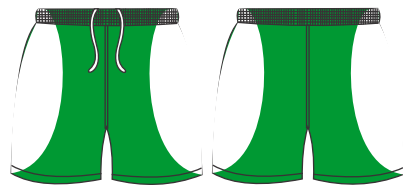


**RAIN JACKET**  
various linings available

# PANELED DESIGNS / SHORTS



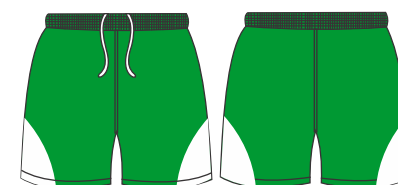
P001



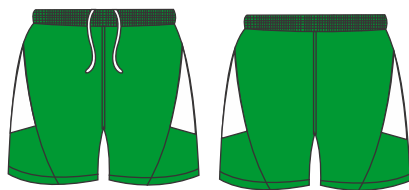
P002



P003

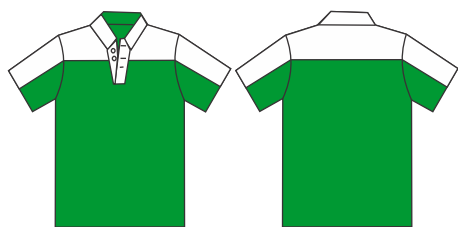


P004



P005

## GOLF



P006



P007



P008



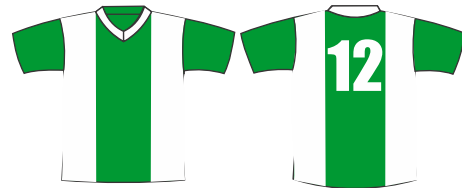
P009

# PANELED DESIGNS

## SOCCER



P010



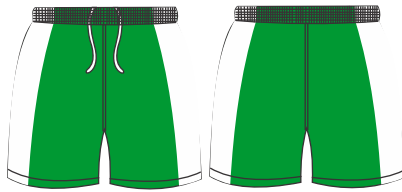
P011



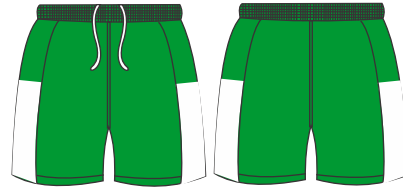
P012



P013

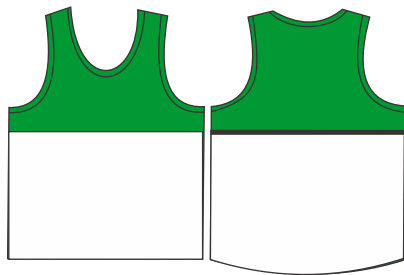


P014



P015

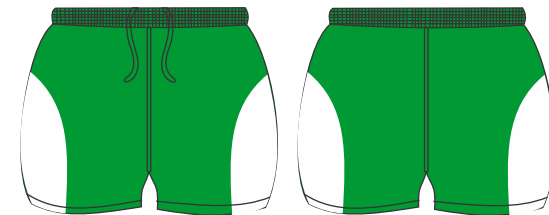
## ATHLETICS



P016



P017



P018

Designs can be adapted across different style garments



# PANELED DESIGNS

## HOCKEY/NETBALL



P019



P020



P021



P022



P023



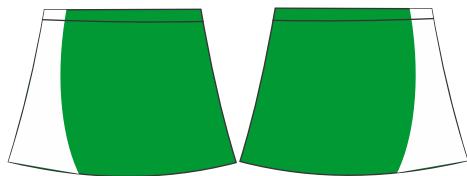
P024



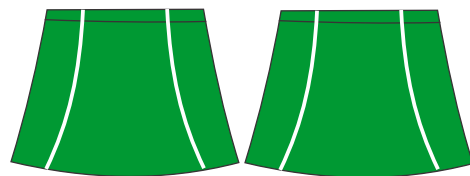
P025



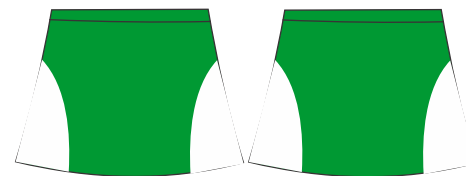
P026



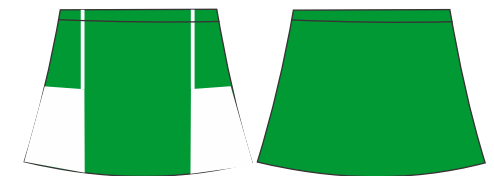
P029



P030



P030



P030

# PANELED DESIGNS



P033



P034



P035



P036



P038



P039



P040

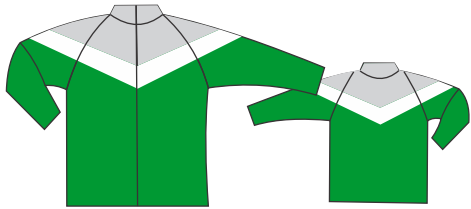


P041

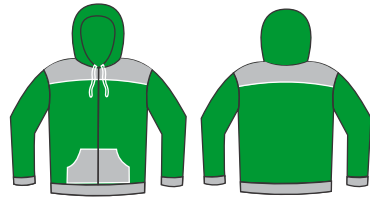
Designs can be adapted across different style garments

# PANELED DESIGNS

## TRACKSUITS & HOODIES



P043



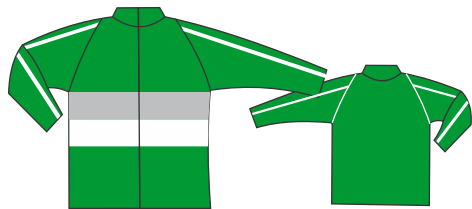
P044



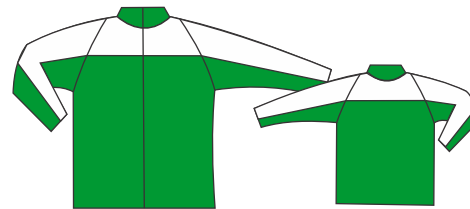
P045



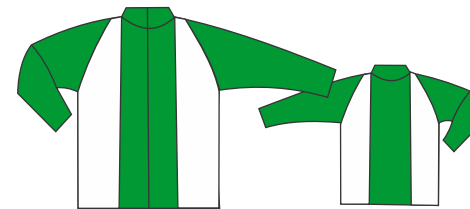
P046



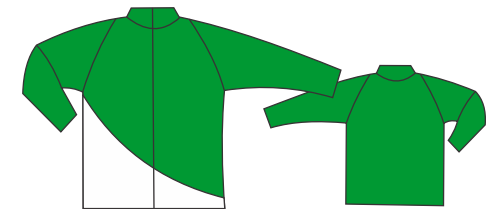
P047



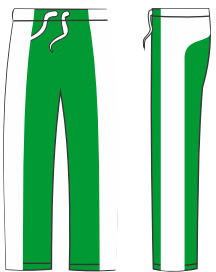
P048



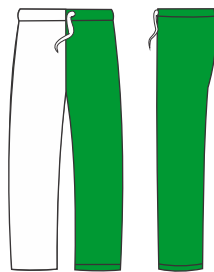
P049



P050



P051



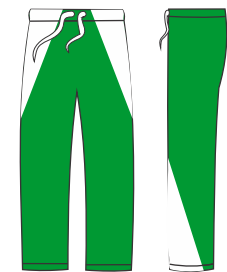
P052



P053



P054

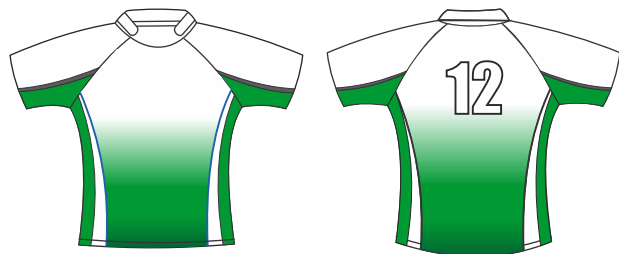


P055

Designs can be adapted across different style garments

# SUBLIMATED DESIGNS

## RUGBY



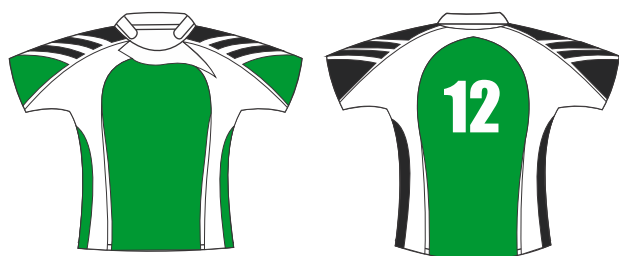
S001



S002



S003



S005



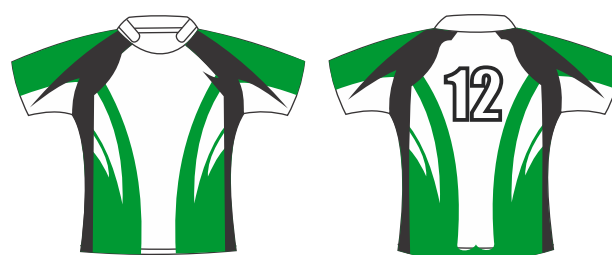
S006



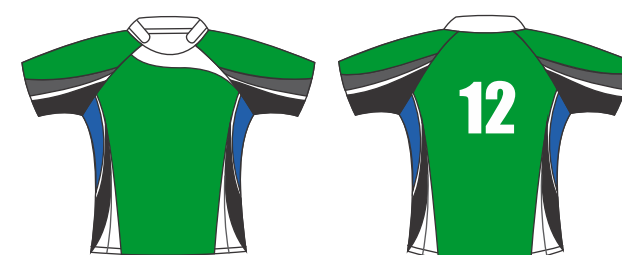
S007



S008



S009



S010

Designs can be adapted across different style garments



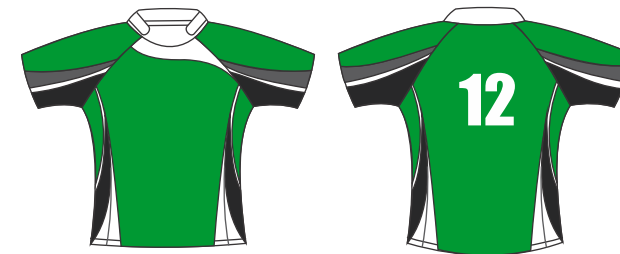
# SUBLIMATED DESIGNS



S020



S021



S022



S023

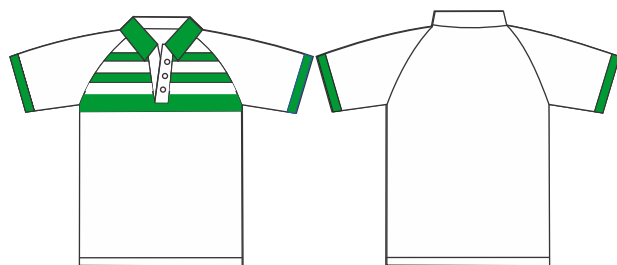


S024

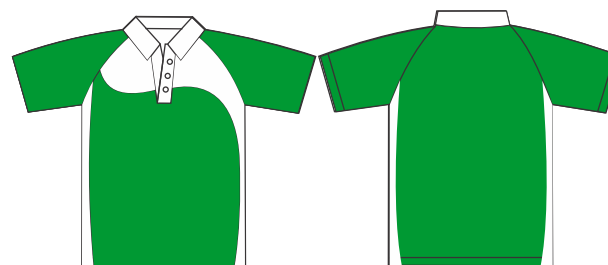


S025

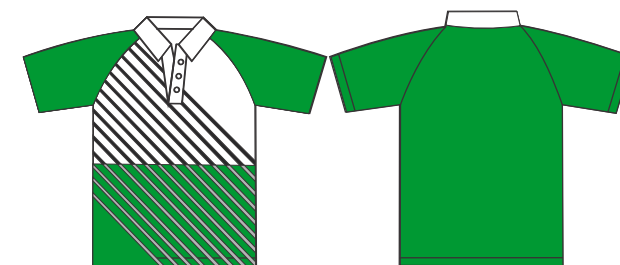
# CRICKET & GOLF



S026



S027



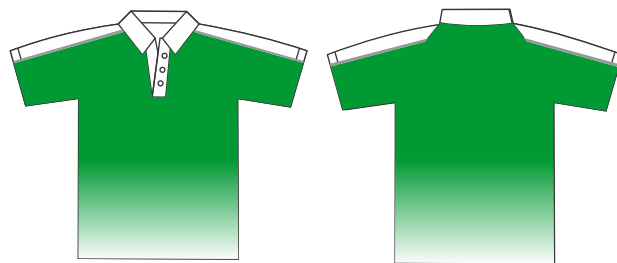
S028

Designs can be adapted across different style garments

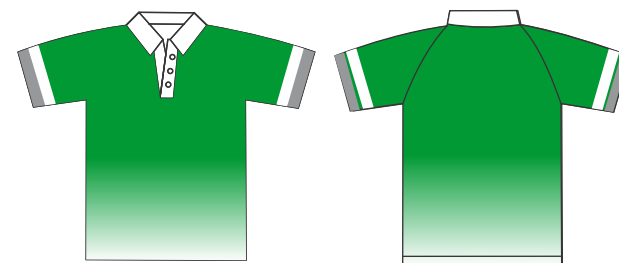
# SUBLIMATED DESIGNS



S029



A030



S031



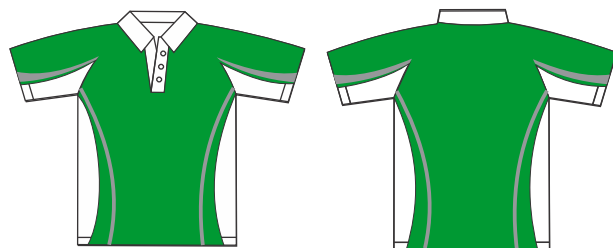
S032



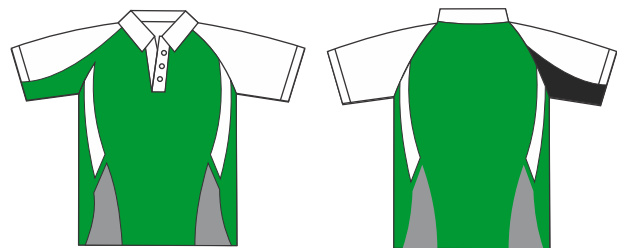
S033



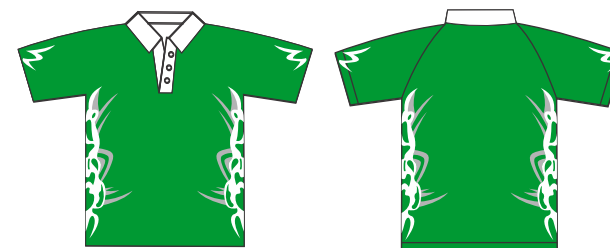
S034



S035

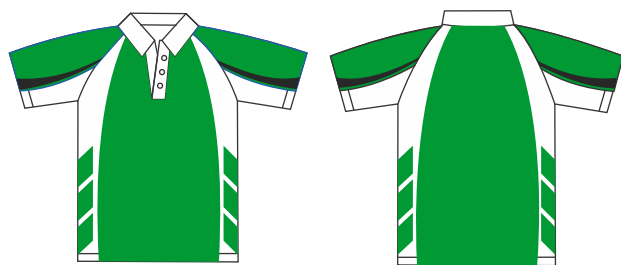


S036

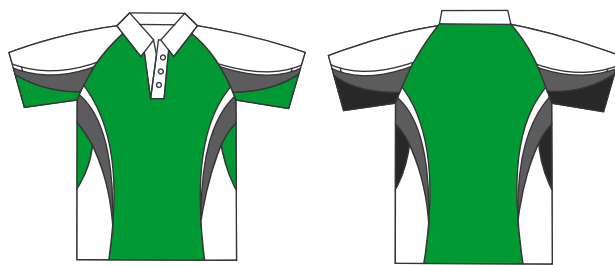


S037

# SUBLIMATED DESIGNS



S038



S039



S040

# SOCCER



S041



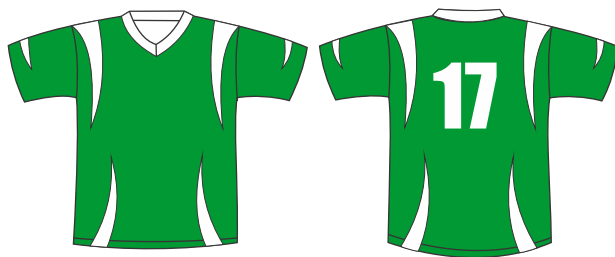
S042



S043



S044



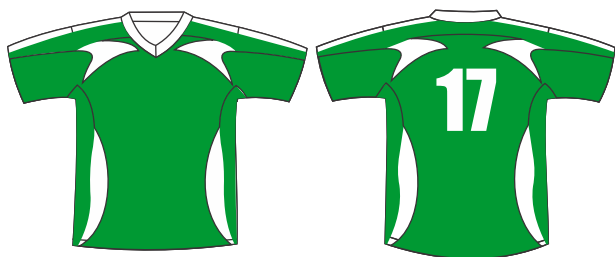
S045



S046

Designs can be adapted across different style garments

# SUBLIMATED DESIGNS



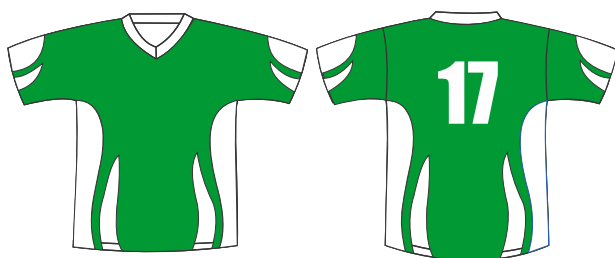
S041



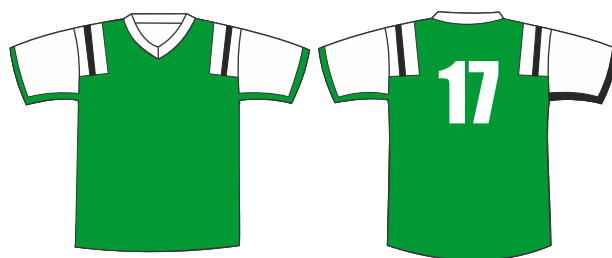
S042



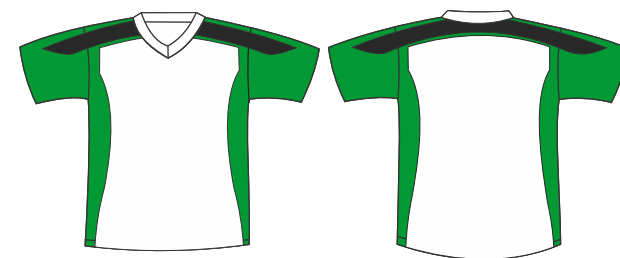
S043



S041

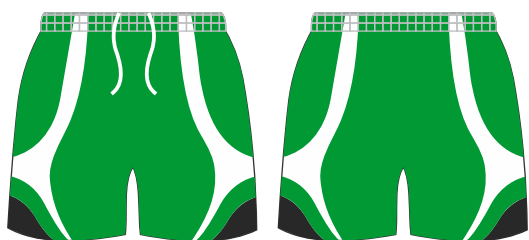


S042

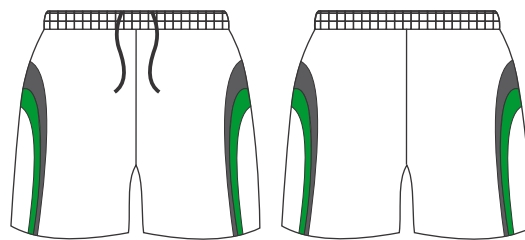


S043

Match your shorts to your shirt design!



S053



S054



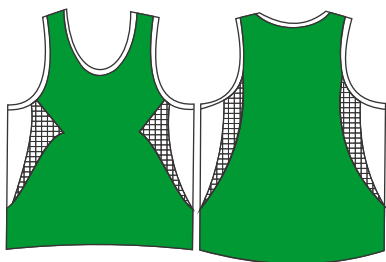
S055

Designs can be adapted across different style garments

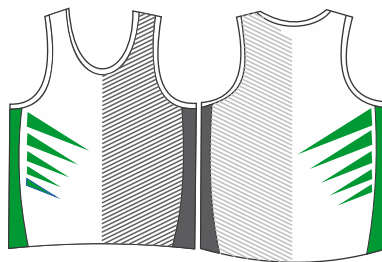


# SUBLIMATED DESIGNS

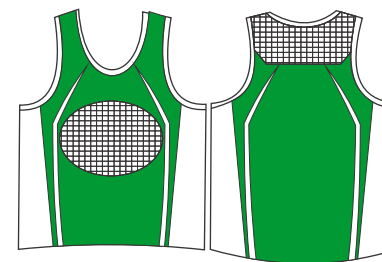
## ATHLETICS & CYCLING



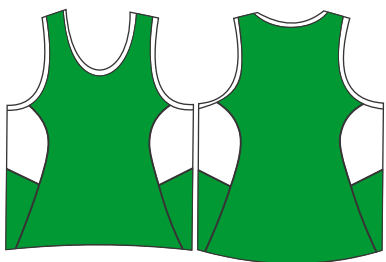
S056



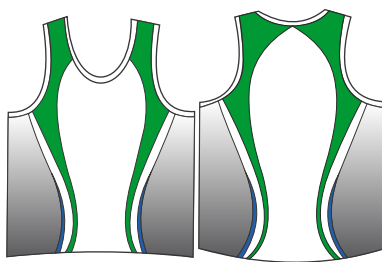
S057



S058



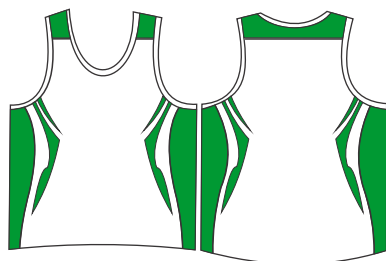
S059



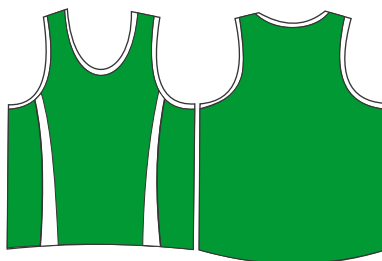
S060



S061



S062



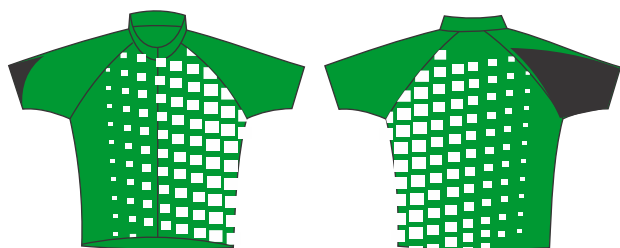
S063



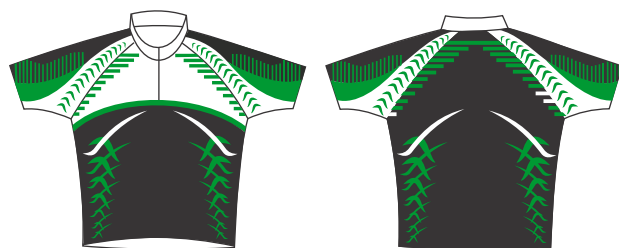
S064

Designs can be adapted across different style garments  
Designs can be adapted across different style garments

# SUBLIMATED DESIGNS



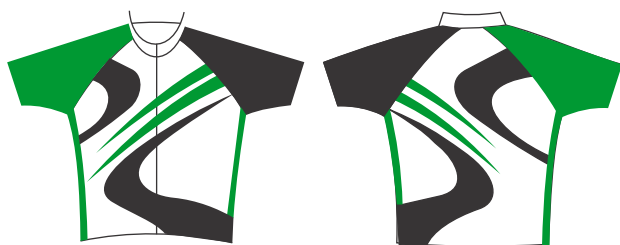
S065



S066



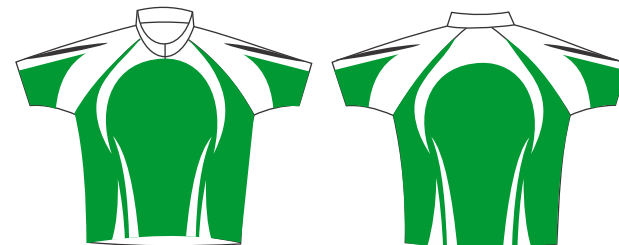
S067



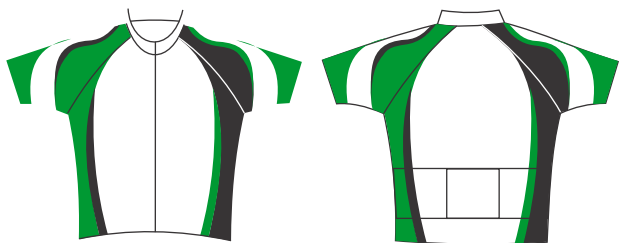
S068



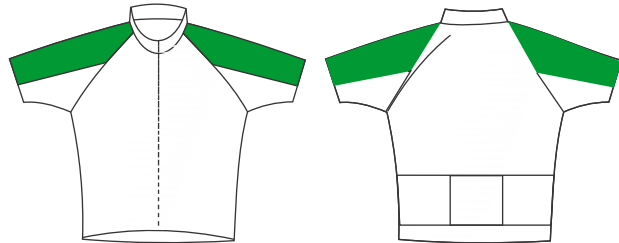
S069



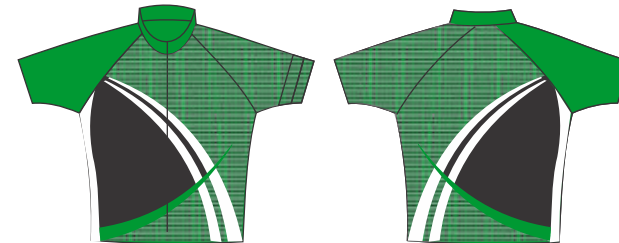
S070



S071



S072



S073

# SUBLIMATED DESIGNS



S086



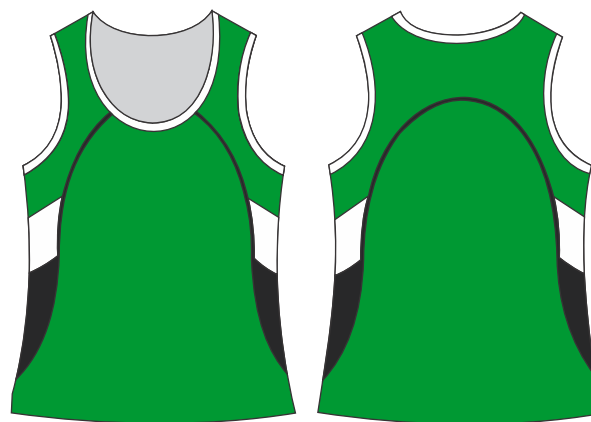
S087



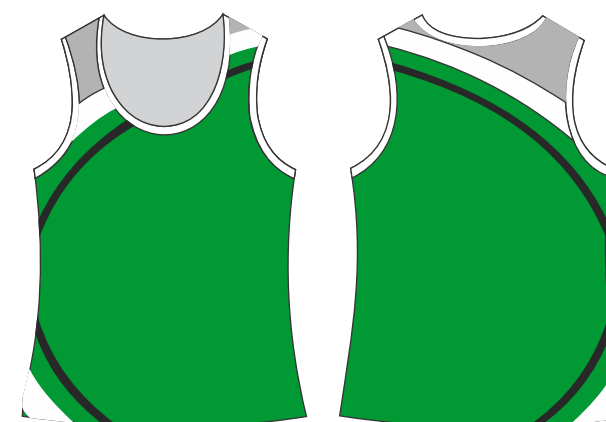
S088



S089



S090



S091

Designs can be adapted across different style garments

# SUBLIMATED DESIGNS



S080



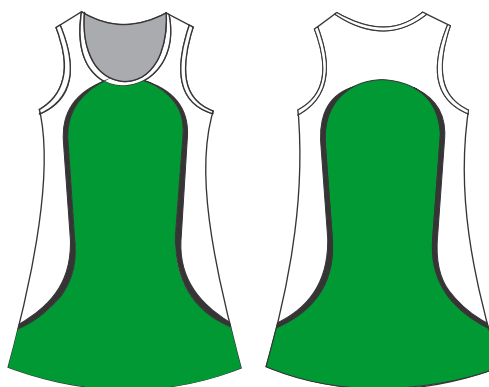
S081



S082



S083



S084



S085

Designs can be adapted across different style garments

# SUBLIMATED DESIGNS



S086



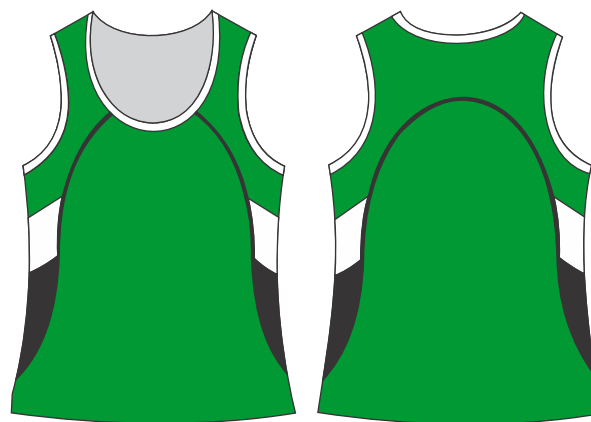
S087



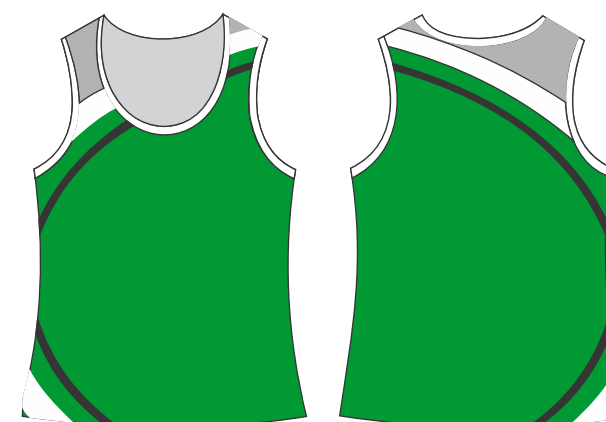
S088



S089



S090



S091

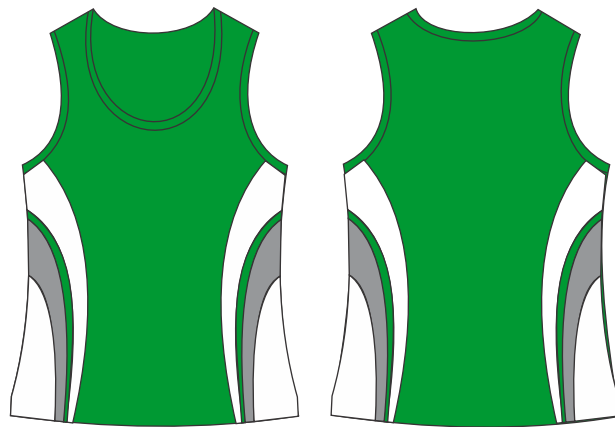
Designs can be adapted across different style garments



# SUBLIMATED DESIGNS



S092



S093



S094



S095



S096

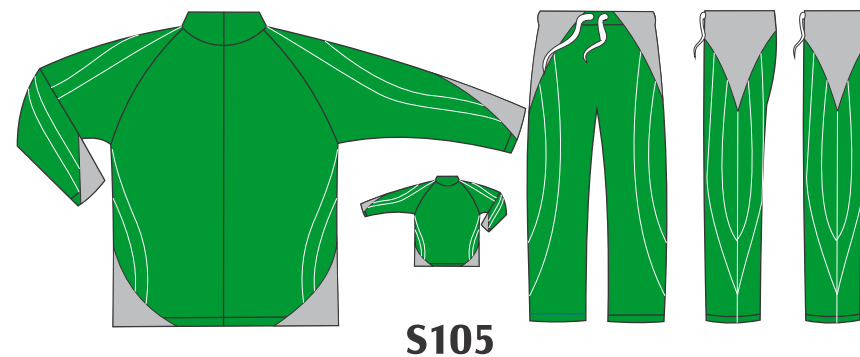


S097

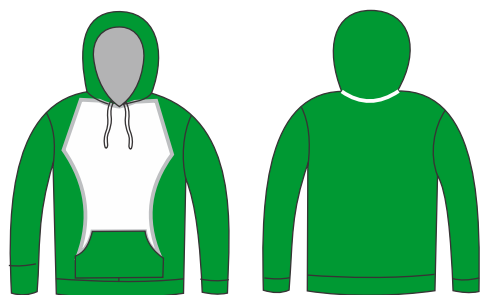
Designs can be adapted across different style garments

# SUBLIMATED DESIGNS

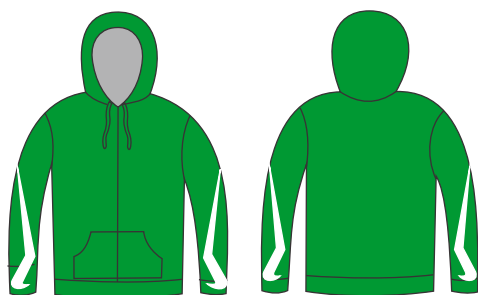
## TRACKSUITS & HOODIES



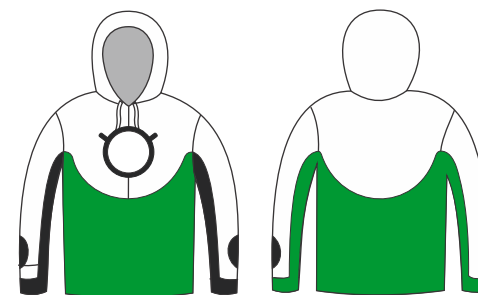
# SUBLIMATED DESIGNS



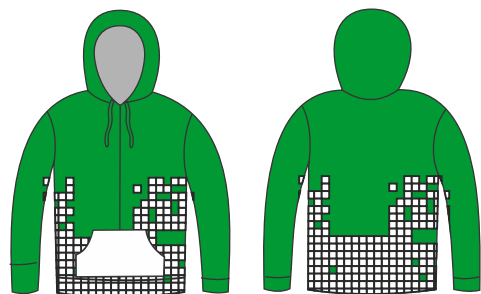
S110



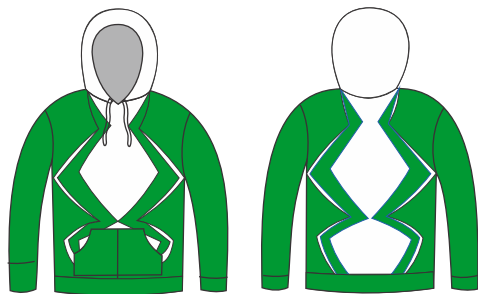
S111



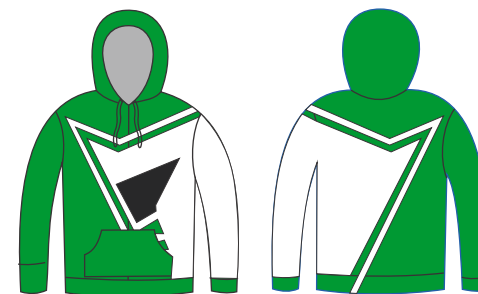
S112



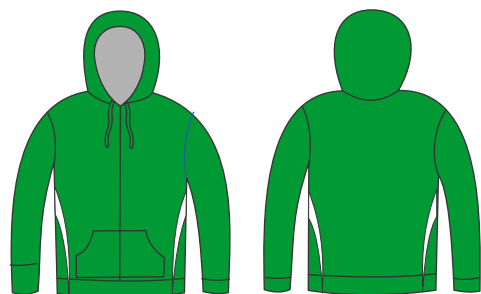
S113



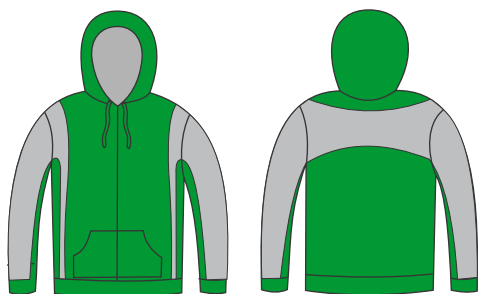
S114



S115



S116



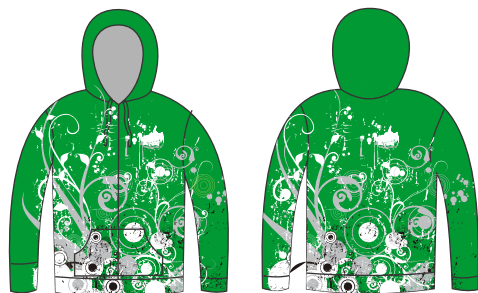
S117



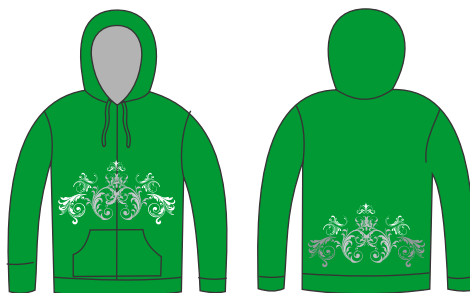
S118

Designs can be adapted across different style garments

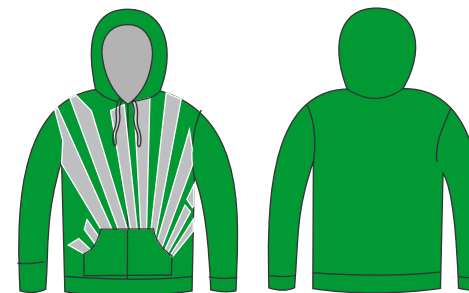
# SUBLIMATED DESIGNS



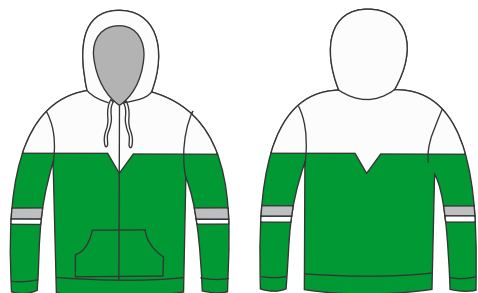
S119



S120



S121



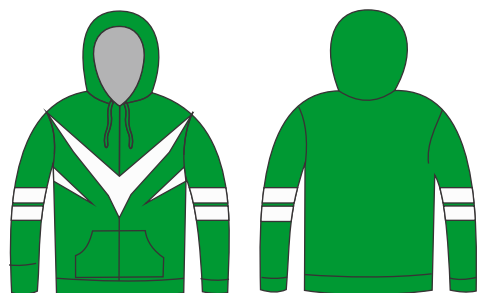
S122



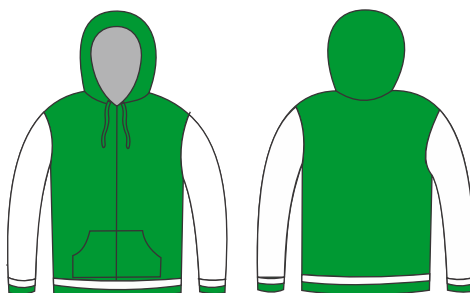
S123



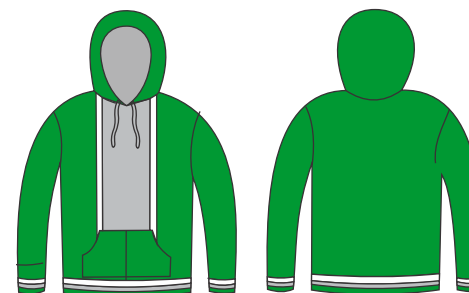
S124



S125



S126



S127

Designs can be adapted across different style garments



# CORPORATE CLOTHING AND ACCESORIES

We also offer a wide variety of gear and accessories which can be branded with your team/sponsor logo.



Browse online for more options:  
[www.barronclothing.co.za](http://www.barronclothing.co.za)  
[www.altitudec.co.za](http://www.altitudec.co.za)  
[www.amrod.co.za](http://www.amrod.co.za)





**KNOCKOUT!**  
BRANDING

29 YORK ROAD  
KENSINGTON  
GOEBERHA  
041 484 1300

[WWW.KNOCKOUTBRANDING.CO.ZA](http://WWW.KNOCKOUTBRANDING.CO.ZA)